



# Technical Service Bulletin

SUBJECT:  <b>Ring terminals do not lay flat on Tesla 90° adapters</b>	NUMBER: TSB-24-001
	DATE: April, 2024
	PRODUCT: 90° adapters for Tesla modules

## PURPOSE

Some affected 90° adapters for the Tesla modules have a raised edge at the stud preventing a good flat surface to the cable ring terminal.

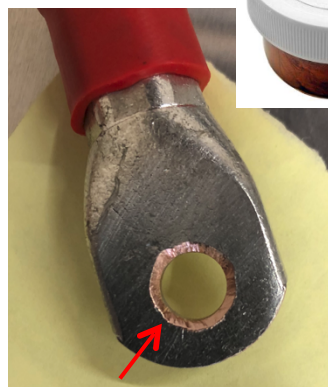
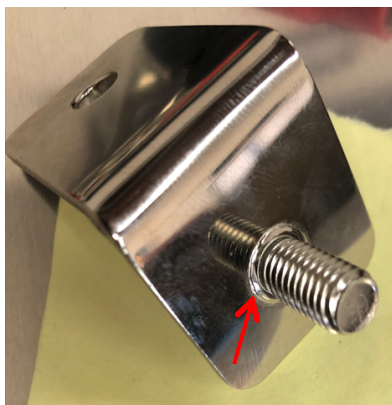
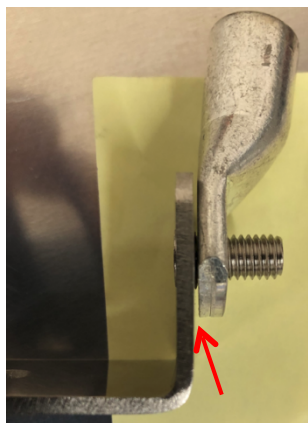
## AFFECTED PRODUCTS

Tesla 90 Degree Battery Bus Bar Bracket – Pure Copper and Nickel Plated.



## REPAIR PROCEDURE

Inspect for clearance between bus bar and terminal. If there is any gap at all, use a countersink drill bit to remove just enough until there is no gap. Apply Wurth copper terminal paste to the machined area and flat mating surfaces.



The information contained in this bulletin is subject to change. The information is deemed reliable, but not guaranteed. Due to the many configurations of electric vehicles, your device may have different conditions including being the wrong device for the application. For the latest updates, visit [evwest.com](http://evwest.com). If you are uncertain about this procedure and purchased your device from EV West, contact [support@evwest.com](mailto:support@evwest.com). Otherwise, contact your retailer or the manufacturer via their website.