

FEATURES

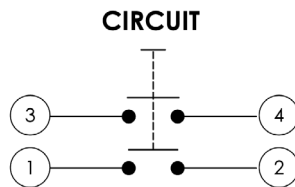
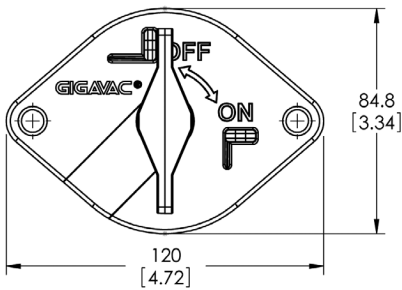
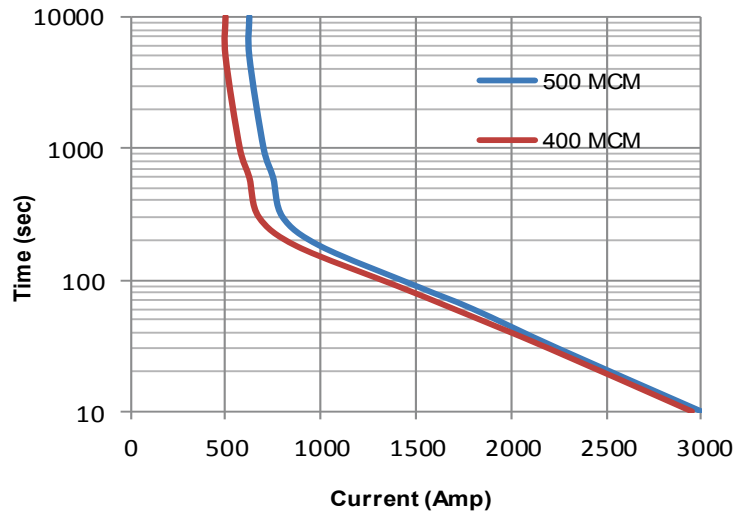
- > Sealed to IP67 and IEC529 providing reliable operation in any environment
- > Meets CE conformance standards - CE Approved
- > 500A continuous rating compliments even the largest of vehicle platforms
- > Overload ratings to 2500A for engine cranking at all temperatures
- > Low stable contact resistance means minimal voltage drop
- > Lock out - tag out feature for maintenance and vehicle storage

TECHNICAL DATA

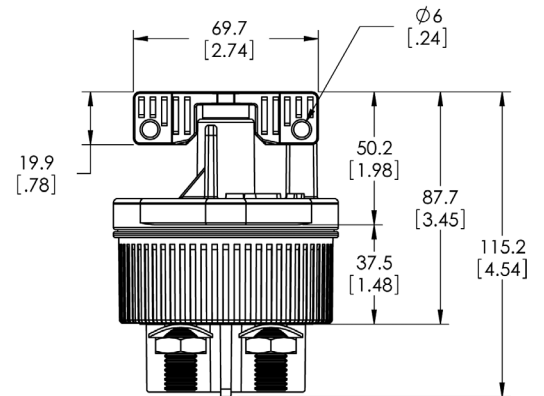
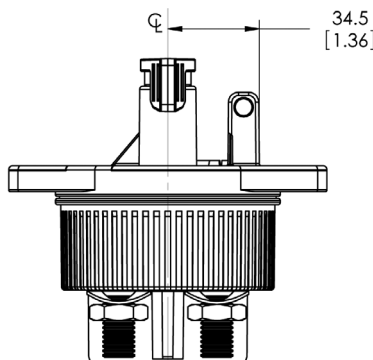
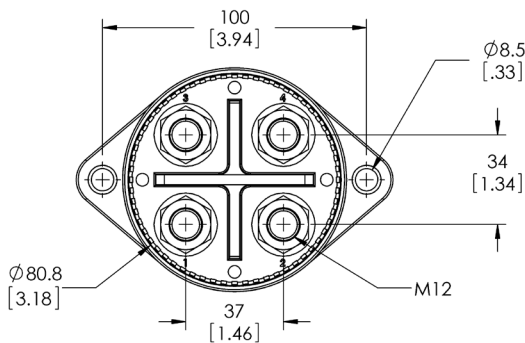
Case/Cover Material	Zytel
Base Plate	Zytel
Switch Lever Material	Zytel
Min. Insulation Resistance	100 MOhm
Dielectric Withstanding Voltage	1050V-1min
Max. Contact Voltage Drop	150mv
Voltage	up to 32VDC
Continuous Rating	2x500A
Overload	2x2000A-1.5 min 2x2500A-10 sec
Sealing	IP67/IEC 529
Vibration	10G 18-500Hz
Weight	700g/1.55lb
Temperature Range	-40C to +85C
Wire Section (at nominal load)	min .250mm ²
Lever	non-removeable
Max. Torque (Main Contacts)	15-20Nm



Current Carry vs Time
with 85°C terminal temperature rise



BD9521 SHOWN





PART NUMBER SYSTEM

BD	9	5	2	1
Mount	9 = Flange Mount, 120mm wide			
Current Rating		5 = 500A		
Power Terminals			1 = M10 terminals 2 = M12 terminals	
Locking Hasps and Lever				1 = ON and OFF, Black lever, 6mm holes 2 = OFF only, Black lever, 8mm holes 3 = ON and OFF, Red lever, 8mm holes 4 = OFF only, Red lever, 8mm holes 5 = ON and OFF, Yellow lever, 8mm holes 6 = OFF only, Yellow lever, 8mm holes