

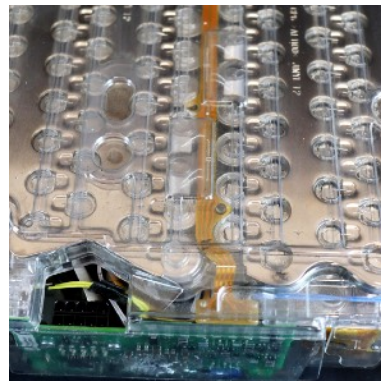
How to Identify Your Tesla Battery Module as REV A, REV B or REV C



In order to identify the revision letter of your Tesla battery module, you must identify and examine a few details. First look at the top of the battery module. If along the top of the pack there is a rainbow wire, then The pack is either REV A or REV B. If the ribbon cable along the top of the battery module is gold, it is a REV C module. In addition, the REV C module has red cable connectors attached to the back of the PCB board.

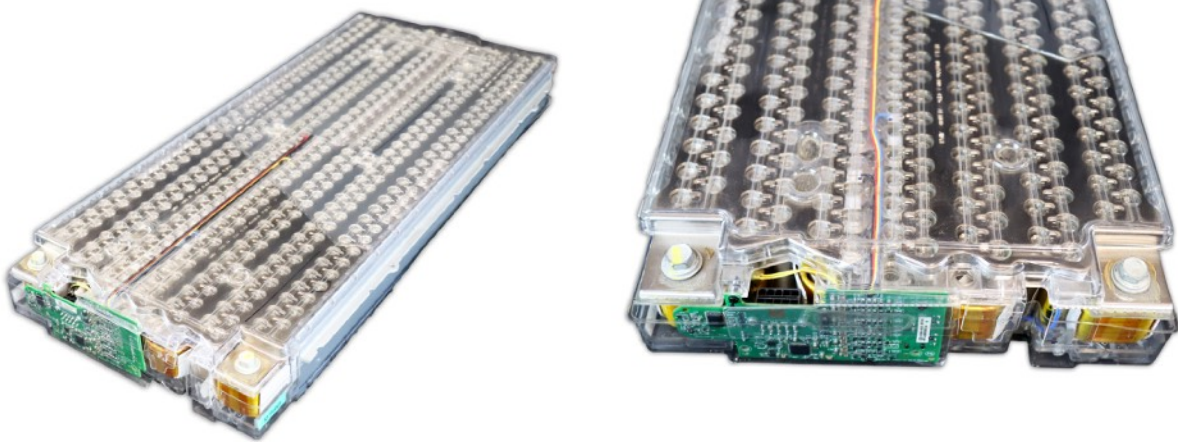
Next, for a pack with a rainbow wire, you must examine the connections to the back of the stock PCB board. If the PCB Board has a connections directly soldered to the back PCB board, it is a REV A module. On the other hand, if there are white cable connectors attaching the PCB board then it is a REV B module. For your convenience, we have also included the following visual guide. If you have questions you can email sales@evwest.com

REV C: Gold colored ribbon cable across the top of the module.

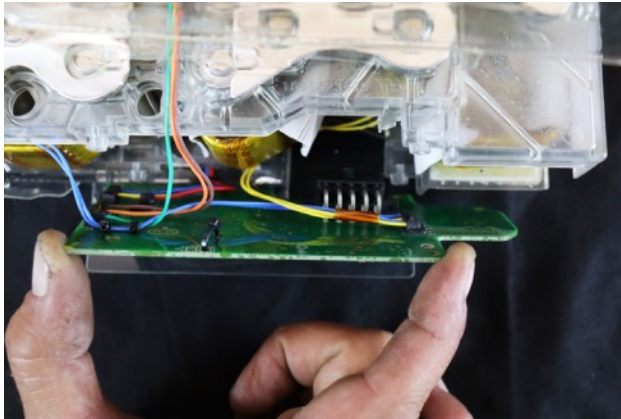


How to Identify Your Tesla Battery Module as REV A, REV B or REV C

REV A & B: Rainbow Cable across the top of the module



REV A - NO end couplers



REV B - white end couplers

