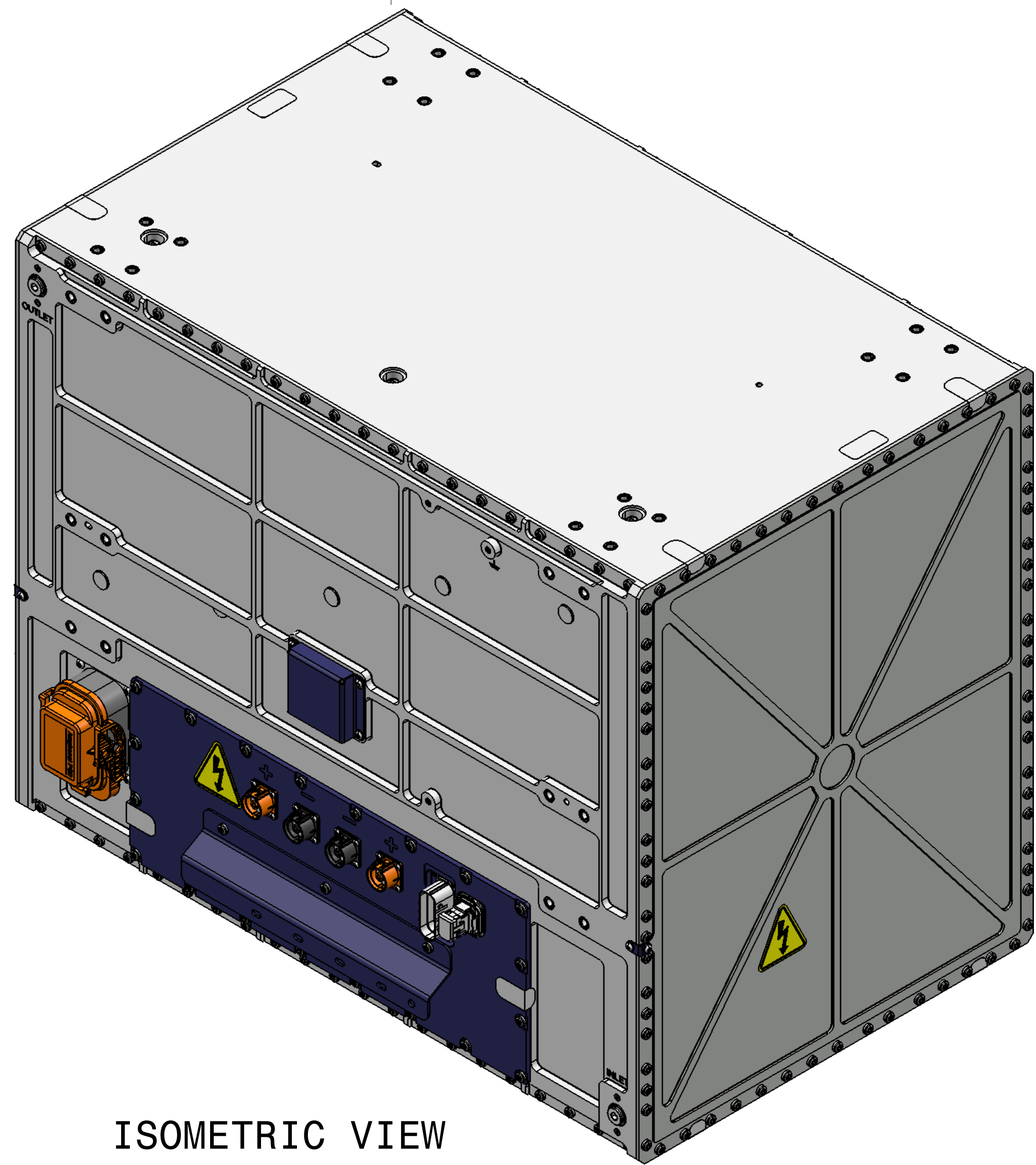


REV	DATE	REVISION COMMENT	NAME
A	3/24/2022	INITIAL RELEASE, B-SAMPLE	GAUTHAM, M.

NOTES:

- INTERFACE CONTROL DRAWING, NOT FOR MANUFACTURE.
 - PACK EXTERIOR TO BE 6061-T651 AL ALLOY, FINISH: BLACK ANODIZATION.
 - MAXIMUM RATED VOLTAGE: 754.4V.
 - MSD CONNECTOR (P6) TO BE SHIPPED LOOSE. REPLACE MSD CONNECTOR PER INSTALLATION AND OPERATION MANUAL DOCUMENT.
- 5 PACK ORIENTATION AND AS-DESIGNED MOUNTING LOCATIONS.



ISOMETRIC VIEW

POINT IDENTIFIER	TYPE	DESCRIPTION	MAX WEIGHT (KG)
CG1	CENTER OF GRAVITY	PACK CENTER OF GRAVITY	510 (8S1P DRY)
POINT IDENTIFIER	TYPE	DESCRIPTION	SIZE
SP1	PACK VENTING SYSTEM	EQUALIZATION VALVE	M32 X 1.5 THD HEXALUBULAR DRIVE SOCKET 70 PER ISO 10664:2014
SP2 THRU SP3	PACK VENTING SYSTEM	BLOWOUT VALVE LHS	
POINT IDENTIFIER	TYPE	DESCRIPTION	SIZE
TP1	FLUID SYSTEM INTERFACE	INLET COOLANT PORT	
TP2	FLUID SYSTEM INTERFACE	OUTLET COOLANT PORT	SAE J1926-1 PORT: 3/4-16 UNF-2B
TP3 THRU TP4	FLUID SYSTEM INTERFACE	PACK DRAINAGE	3/8-24 UN/UNF O-RING PLUG. 5/32 DRIVE BIT
POINT IDENTIFIER	TYPE	DESCRIPTION	SIZE
MP1 THRU MP12	MECHANICAL ATTACHMENT	RHS ATTACH POINTS	
MP13 THRU MP28	MECHANICAL ATTACHMENT	LOWER ATTACH POINTS	M14X1.5 THD ∇ 14.0
MP29 THRU MP44	MECHANICAL ATTACHMENT	UPPER ATTACH POINTS	
MP45 THRU MP60	MECHANICAL ATTACHMENT	LHS ATTACH POINTS	
MP61 THRU MP68	MECHANICAL ATTACHMENT	LOWER AUX ATTACH POINT	M6X1.0 THD ∇ 9.0
MP69 THRU MP70	MECHANICAL ATTACHMENT	RHS AUX ATTACH POINT	
POINT IDENTIFIER	TYPE	DESCRIPTION	PART NUMBER
EP1 THRU EP2	ELECTRICAL CONNECTION	CHASSIS GROUND (ONE CONNECTION REQUIRED)	SIZE: Ø20.00 PAD M6X1.0 THD ∇ 9.0
J1	ELECTRICAL CONNECTION	ELECTRICAL CONNECTION, J1	SRK02-MDA-32A-001
J2	ELECTRICAL CONNECTION	POWER CONNECTOR-POSITIVE	PL00X-301-10M8
J3	ELECTRICAL CONNECTION	POWER CONNECTOR-NEGATIVE	PL00Y-301-10M8
J4	ELECTRICAL CONNECTION	POWER CONNECTOR-NEGATIVE	PL00Y-301-10M8
J5	ELECTRICAL CONNECTION	POWER CONNECTOR-POSITIVE	PL00X-301-10M8
J6/P6	ELECTRICAL CONNECTION	PACK DISCONNECT	SOCKET: MSDXLF000R PLUG: MSDXLM400
J7	ELECTRICAL CONNECTION	DIAGNOSTIC CONNECTOR	1-1564416-1

THE INFORMATION, TECHNICAL DATA AND DESIGNS DISCLOSED HEREIN ARE THE EXCLUSIVE PROPERTY OF ROMEO SYSTEMS, INC. AND/OR CONTAIN PROPRIETARY RIGHTS OF OTHERS AND ARE NOT TO BE USED, REPRODUCED OR DISCLOSED TO OTHERS WITHOUT THE WRITTEN CONSENT OF ROMEO SYSTEMS, INC. IF CONSENT TO DISCLOSURE, RELEASE OR REPRODUCTION IS PROVIDED BY ROMEO SYSTEMS, INC., THIS PROPRIETARY INFORMATION NOTICE AND THE NOTICE SET FORTH ON EACH PAGE OF THIS DOCUMENT SHALL APPEAR IN SUCH FULL OR PARTIAL DISCLOSURE, RELEASE AND/OR REPRODUCTION, THE INFORMATION CONTAINED IN THIS DOCUMENT MAY ALSO BE CONTROLLED BY EXPORT CONTROL LAWS. UNAUTHORIZED EXPORT OR RE-EXPORT OF ANY DATA IS PROHIBITED.

UNLESS OTHERWISE SPECIFIED
INTERPRET DRAWING PER
ASME Y14.5-2009

DIMENSIONS ARE IN MILLIMETERS

LINEAR TOLERANCES	.X	±0.8
	.XX	±0.25
	.XXX	±0.130

ANGULAR TOLERANCES ±0°30'

ALL MACHINED SURFACES $3.2\sqrt{\quad}$

THIRD ANGLE PROJECTION

DRAWN BY: HUYNH H.
DATE: 3/24/2022

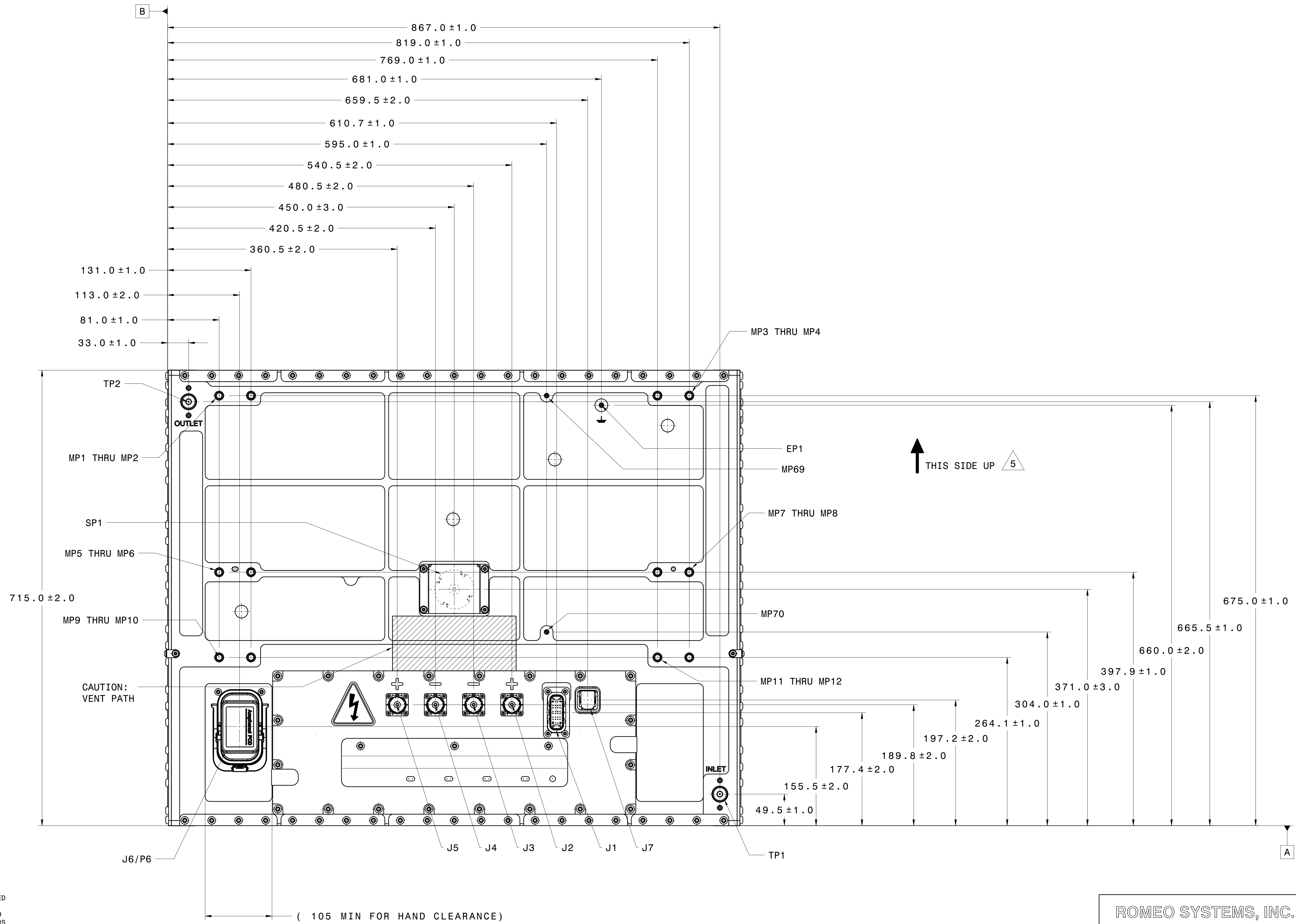
DESIGNED BY: MANUR G.
DATE: 3/24/2022

4380 Ayers Ave
Vernon
CA 90058
USA

ROMEO SYSTEMS, INC.

TITLE:
**MENARA 80 INTERFACE CONTROL
DRAWING, PN - 300**

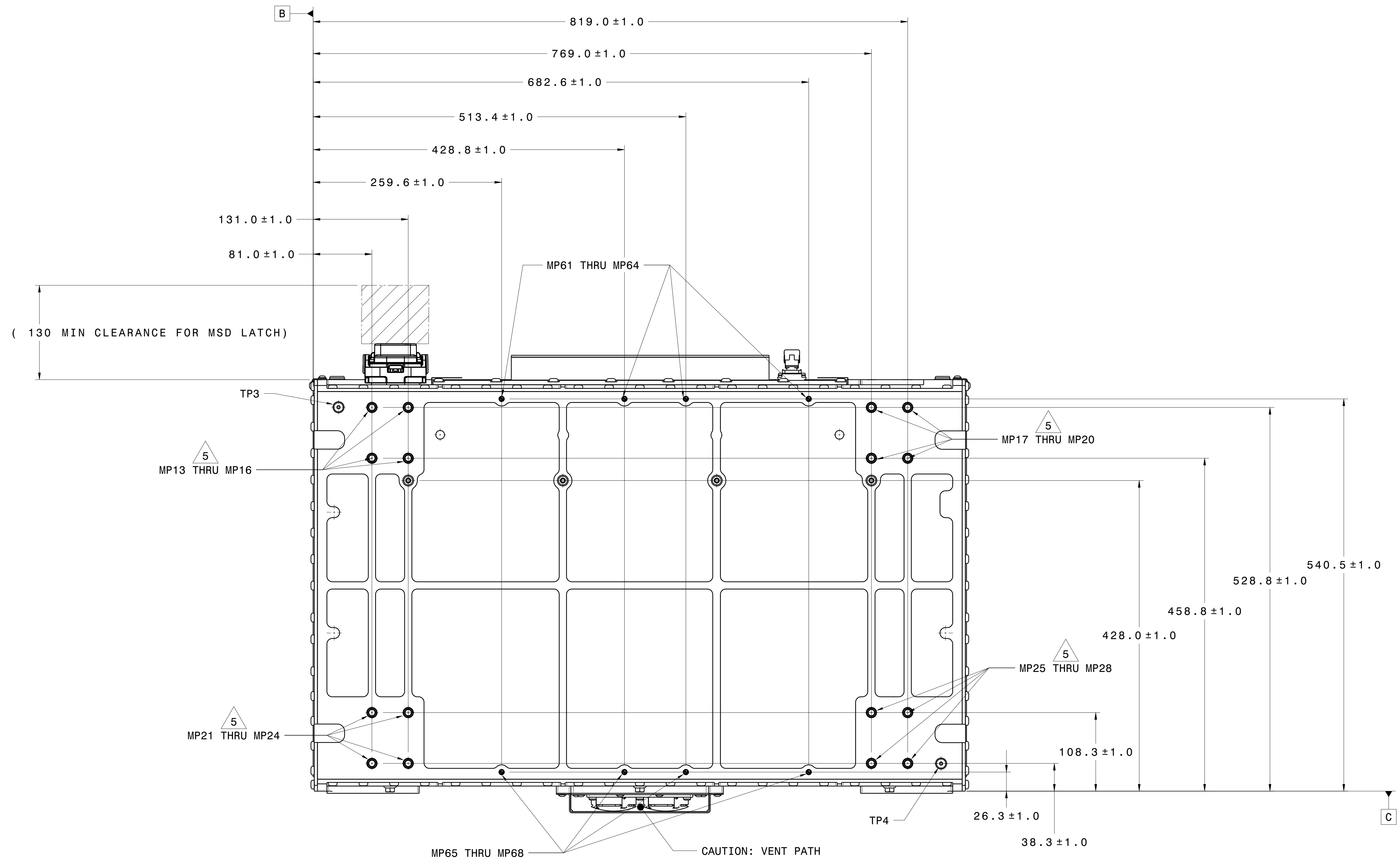
SIZE: D ASME	PART NO: P00019555A	MINOR REV: 1
SCALE: 1:4	PRG: MN-80	SHEET: 1 / 5



THE INFORMATION, TECHNICAL DATA AND DESIGNS DISCLOSED HEREIN ARE THE EXCLUSIVE PROPERTY OF ROMEO SYSTEMS, INC. AND/OR CONTAIN PROPRIETARY RIGHTS OF OTHERS AND ARE NOT TO BE USED, REPRODUCED OR DISCLOSED TO OTHERS WITHOUT THE WRITTEN CONSENT OF ROMEO SYSTEMS, INC. IF CONSENT TO DISCLOSURE, RELEASE OR REPRODUCTION IS PROVIDED BY ROMEO SYSTEMS, INC., THIS PROPRIETARY INFORMATION NOTICE AND THE NOTICE SET FORTH ON EACH PAGE OF THIS DOCUMENT SHALL APPEAR IN SUCH FULL OR PARTIAL DISCLOSURE, RELEASE AND/OR REPRODUCTION, THE INFORMATION CONTAINED IN THIS DOCUMENT MAY ALSO BE CONTROLLED BY EXPORT CONTROL LAWS. UNAUTHORIZED EXPORT OR RE-EXPORT OF ANY DATA IS PROHIBITED.

RIGHT HAND SIDE VIEW

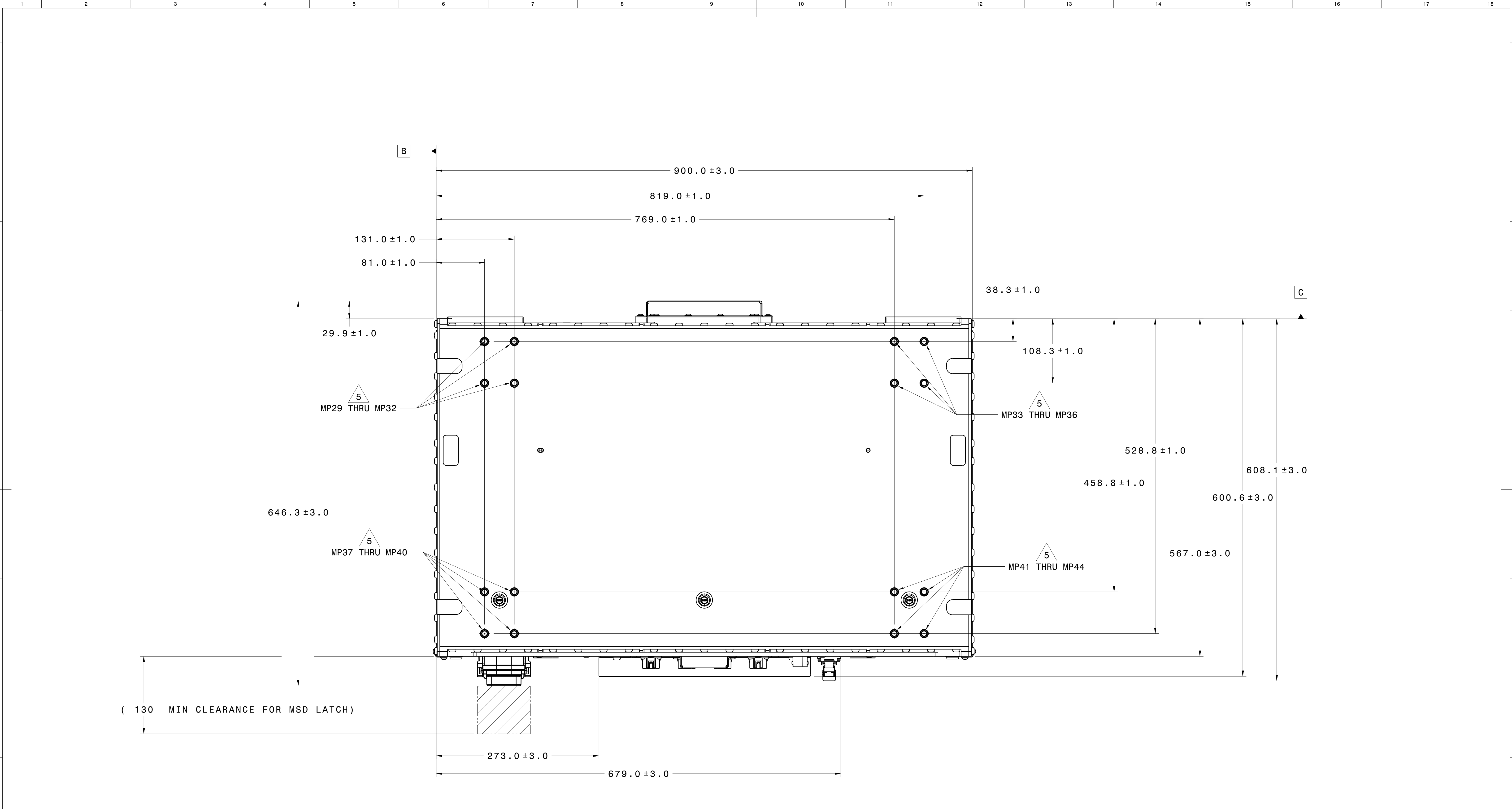
ROMEO SYSTEMS, INC.		4380 Ayers Ave Vernon CA 90058 USA
SIZE: D ASME	PART NO: P00019555A	MINOR REV: 1
SCALE: 1:3	PRG: MN-80	SHEET: 2 / 5



BOTTOM VIEW

THE INFORMATION, TECHNICAL DATA AND DESIGNS DISCLOSED HEREIN ARE THE EXCLUSIVE PROPERTY OF ROMEO SYSTEMS, INC. AND/OR CONTAIN PROPRIETARY RIGHTS OF OTHERS AND ARE NOT TO BE USED, REPRODUCED OR DISCLOSED TO OTHERS WITHOUT THE WRITTEN CONSENT OF ROMEO SYSTEMS, INC. IF CONSENT TO DISCLOSURE, RELEASE OR REPRODUCTION IS PROVIDED BY ROMEO SYSTEMS, INC., THIS PROPRIETARY INFORMATION NOTICE AND THE NOTICE SET FORTH ON EACH PAGE OF THIS DOCUMENT SHALL APPEAR IN SUCH FULL OR PARTIAL DISCLOSURE, RELEASE AND/OR REPRODUCTION, THE INFORMATION CONTAINED IN THIS DOCUMENT MAY ALSO BE CONTROLLED BY EXPORT CONTROL LAWS. UNAUTHORIZED EXPORT OR RE-EXPORT OF ANY DATA IS PROHIBITED.

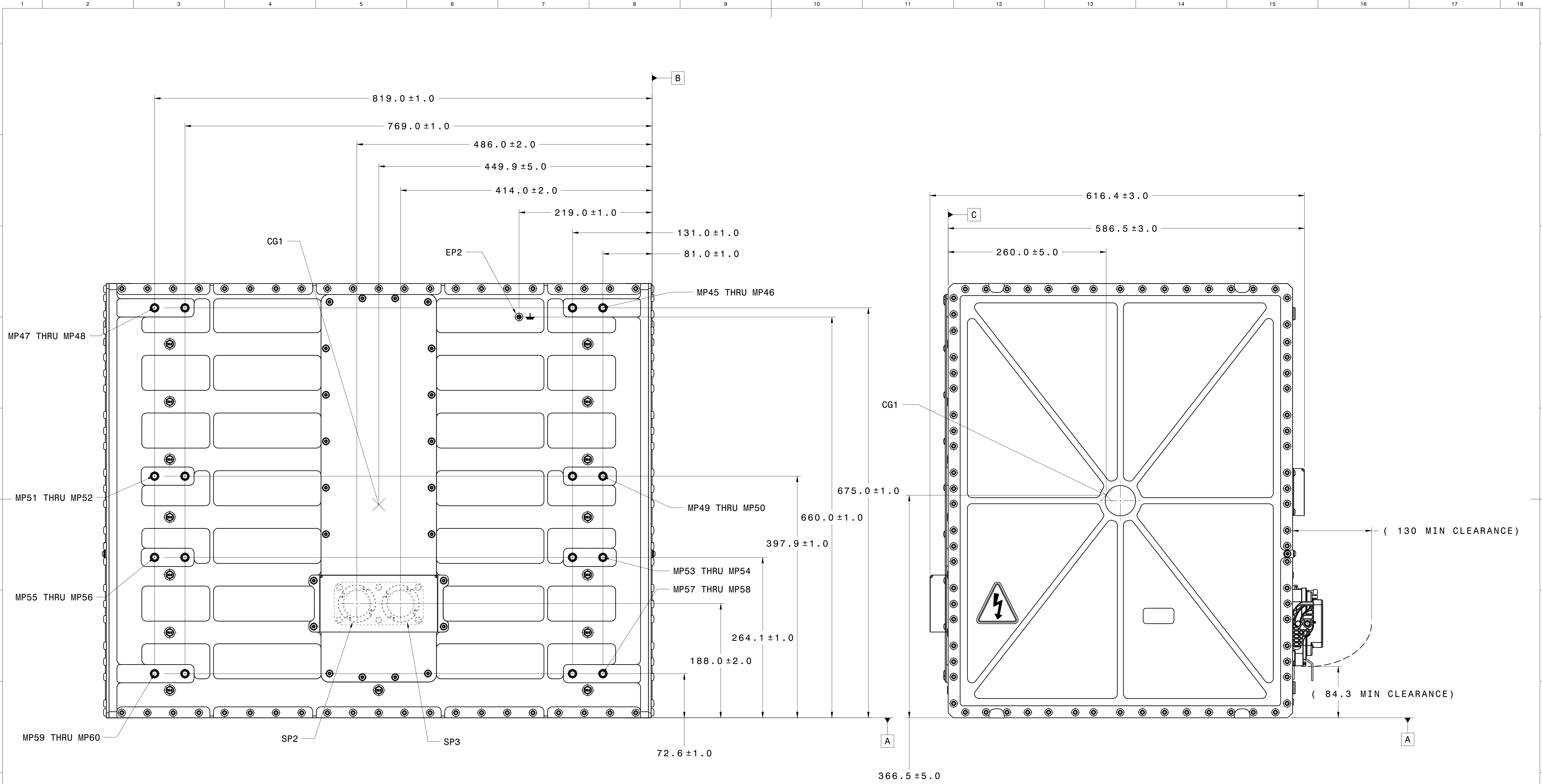
ROMEO SYSTEMS, INC. <small>4380 Ayers Ave Vernon CA 90058 USA</small>		SIZE: D ASME	PART NO: P00019555A	MINOR REV: 1
		SCALE: 1:3	PRG: MN-80	SHEET: 3 / 5



TOP VIEW

THE INFORMATION, TECHNICAL DATA AND DESIGNS DISCLOSED HEREIN ARE THE EXCLUSIVE PROPERTY OF ROMEO SYSTEMS, INC. AND/OR CONTAIN PROPRIETARY RIGHTS OF OTHERS AND ARE NOT TO BE USED, REPRODUCED OR DISCLOSED TO OTHERS WITHOUT THE WRITTEN CONSENT OF ROMEO SYSTEMS, INC. IF CONSENT TO DISCLOSURE, RELEASE OR REPRODUCTION IS PROVIDED BY ROMEO SYSTEMS, INC., THIS PROPRIETARY INFORMATION NOTICE AND THE NOTICE SET FORTH ON EACH PAGE OF THIS DOCUMENT SHALL APPEAR IN SUCH FULL OR PARTIAL DISCLOSURE, RELEASE AND/OR REPRODUCTION, THE INFORMATION CONTAINED IN THIS DOCUMENT MAY ALSO BE CONTROLLED BY EXPORT CONTROL LAWS. UNAUTHORIZED EXPORT OR RE-EXPORT OF ANY DATA IS PROHIBITED.

ROMEO SYSTEMS, INC.		4380 Ayers Ave Vernon CA 90058 USA
SIZE: D ASME	PART NO: P00019555A	MINOR REV: 1
SCALE: 1:3	PRG: MN-80	SHEET: 4 / 5



THE INFORMATION, TECHNICAL DATA AND DESIGNS DISCLOSED HEREIN ARE THE EXCLUSIVE PROPERTY OF ROMEO SYSTEMS, INC. AND/OR CONTAIN PROPRIETARY RIGHTS OF OTHERS AND ARE NOT TO BE USED, REPRODUCED OR DISCLOSED TO OTHERS WITHOUT THE WRITTEN CONSENT OF ROMEO SYSTEMS, INC. IF CONSENT TO DISCLOSURE, RELEASE OR REPRODUCTION IS PROVIDED BY ROMEO SYSTEMS, INC., THIS PROPRIETARY INFORMATION NOTICE AND THE NOTICE SET FORTH ON EACH PAGE OF THIS DOCUMENT SHALL APPEAR IN SUCH FULL OR PARTIAL DISCLOSURE, RELEASE AND/OR REPRODUCTION, THE INFORMATION CONTAINED IN THIS DOCUMENT MAY ALSO BE CONTROLLED BY EXPORT CONTROL LAWS. UNAUTHORIZED EXPORT OR RE-EXPORT OF ANY DATA IS PROHIBITED.

ROMEO SYSTEMS, INC.		4380 Ayers Ave Vernon CA 90058 USA
SIZE: D	PART NO: P00019555A	MINOR REV: 1
ASME		
SCALE: 1:3	PRG: MN-80	SHEET: 5 / 5