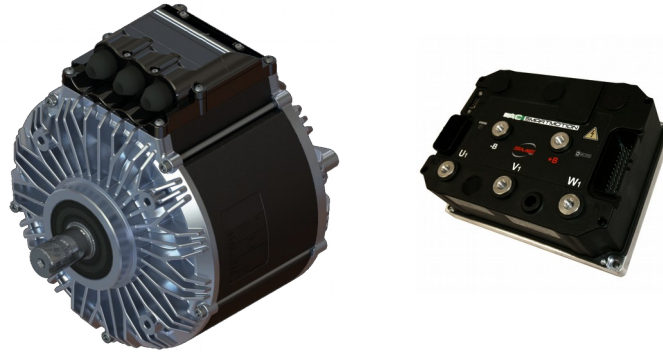




NetGain Motors, Inc.

800 South State Street / Suite 4 / Lockport, IL 60441 / 630-243-9100 / 630-685-4054 (FAX)

Micro 880™



SRIPM Advantages

EFFICIENCY

The constant and revolving fields rotate at synchronous speeds, allowing for precise control with no rotor slip.

PRECISION

TORQUE

The Internal Permanent Magnets produce significant torque over non-magnetic SR motors.

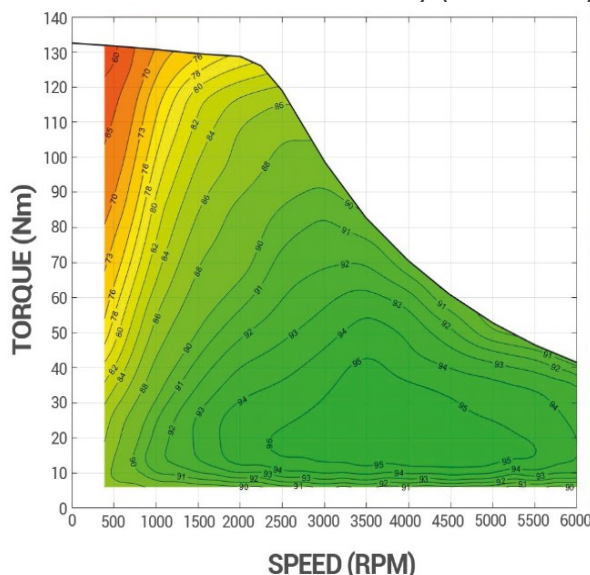
INTEGRATION

The Integrated motor and controller/inverter are designed for and mapped to one other for maximum performance and efficiency.

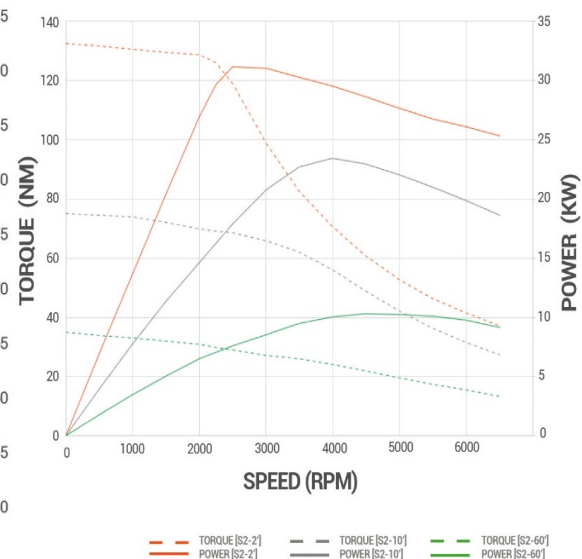
Introducing the newest member of the **NetGain Motors, Inc.** product line. The **Micro 8L™** is the ideal power-train for any light to mid-weight ORV. Combine multiple systems for heavy-weight and racing vehicles. Its potted stator provides outstanding reliability and thermal transfer. The standalone motor is rated at IP65 which can be increased to IP69k with optional shaft seal, or when mated to a sealed gearbox.

- Type: **IPM**
- Voltage: **80V Nominal**
- Current: **250-750 Arms**
- Peak Efficiency: **95%**
- S2-5min Power: **32kW**
- Continuous Power: **10kW**
- Max Speed: **8,000RPM**
- Torque Peak: **98 lbs.-ft.**
- Motor Diameter: **8.19"**
- Motor Length: **6.30"**
- Motor Weight: **40 lbs.**
- Shaft: **Single Ended, Keyed**
- Mounting: **152mm**
- Insulation: **200°C**
- Software: **SmartView**
- Delivery: **Stock**

Micro 8L™ – Efficiency (48V 650A)

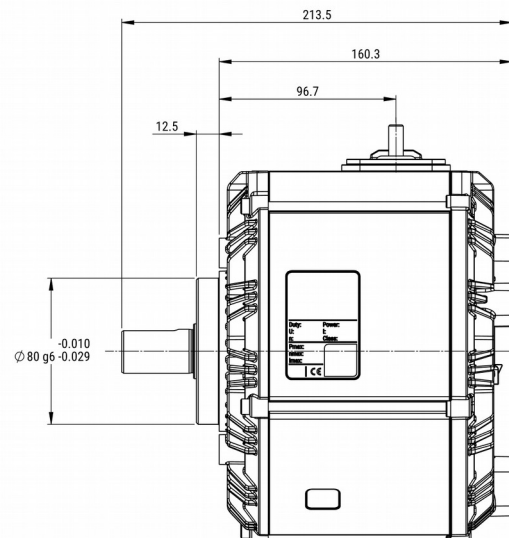
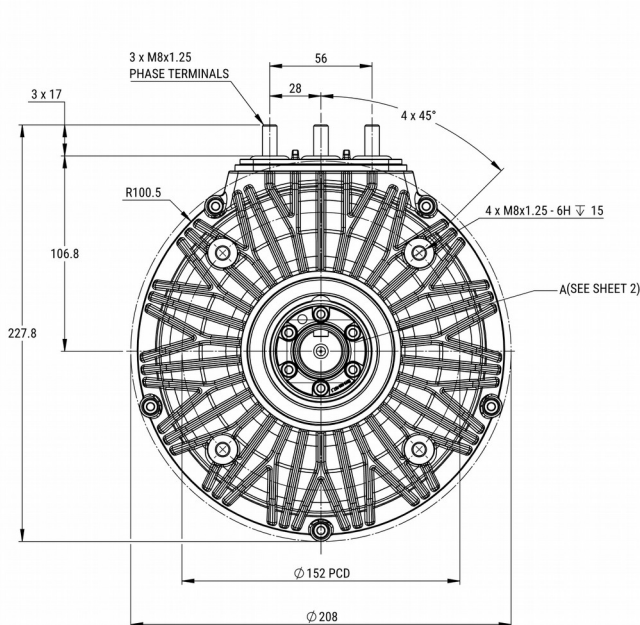
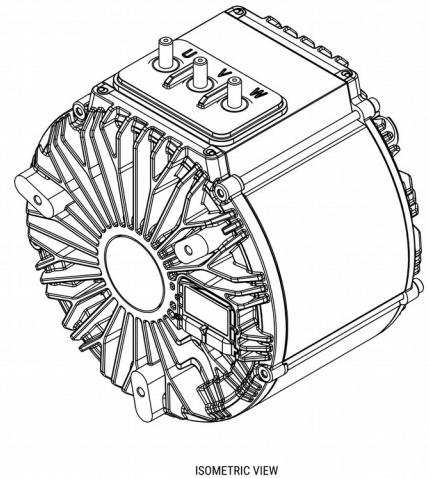
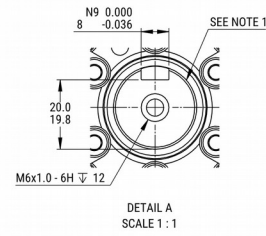
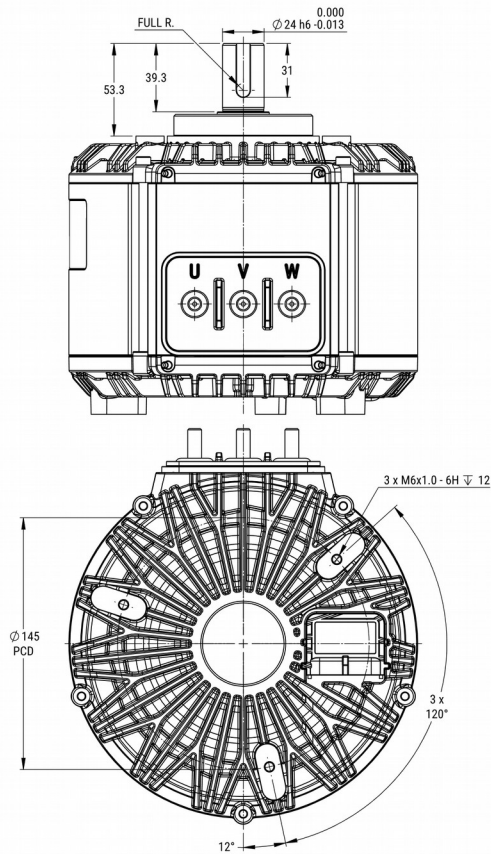


Micro 8L™ – Power Curves

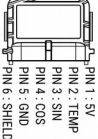


NetGain Motors, Inc.

800 South State Street / Suite 4 / Lockport, IL 60441 / 630-243-9100 / 630-685-4054 (FAX)



MOTOR TYPE	Micro 8L™	
VOLTAGE	VDC	80
IEC DUTY	S2	60
RATED POWER	KW	10
RATED SPEED	RPM	4000
MAX. SPEED	RPM	8000
MAX. FREQ.	HZ	667
IP RATING*	IP	65/69K
INSUL. CLASS	IEC	200
SENSOR CYCLES	CPR	5
TEMP SENSOR	PT1000	CLASS B

ENCODER:	SUPERSEAL 1.5 SOCKET	CUSTOMER APPROVAL:
	MATING PLUG P/N: 282090-1	NAME:
	MATING PIN P/N: 183035-1	DATE:
		SIGNED:

PIN:	FUNCTION:
PIN 1:	SV
PIN 2:	TEMP
PIN 3:	SIN
PIN 4:	COS
PIN 5:	GND
PIN 6:	SHIELD

- NOTES:
1. KEYWAY DIMENSIONS TO ISO/R773
 2. SHAFT ROTATES CW, WHEN VIEWED FROM DRIVE END, WHEN COSINE SIGNAL LEADS SINE SIGNAL BY 90 DEGREES
 3. SHAFT ROTATES CW, WHEN VIEWED FROM DRIVE END, WHEN U-V-W WIRED PER DIAGRAM
 4. TERMINAL NUTS: TORQUE TO 15Nm
 5. SEE MANUAL FOR RECOMMENDED TORQUE VALUES OF MOTOR FASTENERS
 6. ESTIMATED ROTATIONAL MOMENT OF INERTIA: 11043 kg/mm²
 7. * IP RATINGS - SEE USER MANUAL FOR FURTHER DETAILS