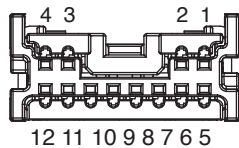
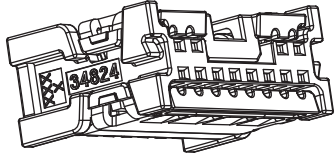


**EV West - Model S Tesla Battery
BMS PCB Board
Rev. A, B, & C**

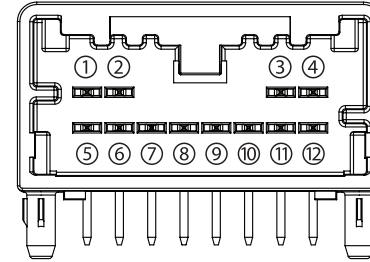
Revision 1.2 - 9/22



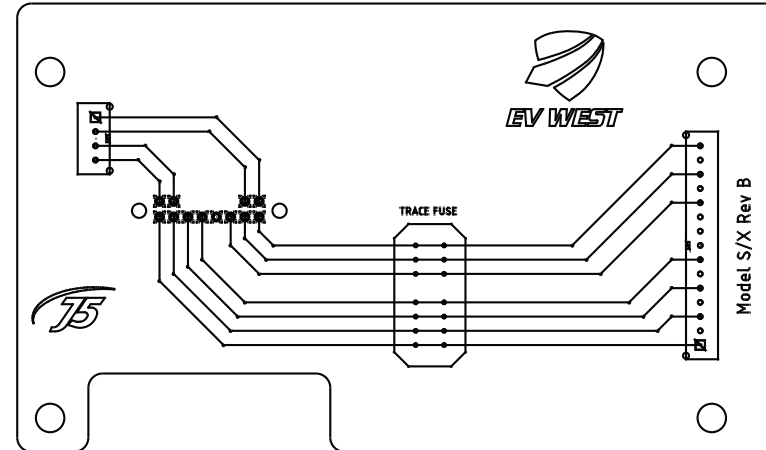
View: Looking at the FRONT Side of the BMS PCB Connector

Position # - Color

- 1 - Purple - Thermistor (See Note)
- 2 - Pink - Thermistor
- 3 - Purple - Thermistor
- 4 - Pink - Thermistor
- 5 - Blue - C6+
- 6 - Yellow - C4+
- 7 - Red - C2+
- 8 - Black - C1- (Module Negative)
- 9 - (no wire in this position)
- 10 - Brown - C1+
- 11 - Orange - C3+
- 12 - Green - C5+



On Board Connector
View: Looking into the receptacle.



Thermistor Note: Tesla has changed pin positions for the battery thermistors. It's important to use an Ohm meter to find the 2 proper wires for each thermistor. To find a matched pair, use the Ohm meter to find each pair with 5k-10k Ohm between the wires, this is a valid output for the thermistor. These pairs might be Pink/Pink or Pink/Purple.