



Installation Guide

VW Beetle Front Battery Box '59 - '71 Kit

Figure 1



Hardware Included

1. Battery box with lid (qt 1)
2. Plastic dividers (qty 2)
3. Metal spacer (qt 1)
4. Enclosure screws M4 x .7 60mm long (qty 14)
5. Bulkhead Box CAN Bus Plug Kit MX150 (qt 1)

If anything is missing from your kit, stop now and contact sales@ewwest.com

Tools Needed

1. 2.5mm Allen Wrench
2. Drill & unibit to drill one inch hole
3. Phillips Screwdriver
4. Adjustable Wrench

Figure 2



We suggest dry the enclosure before paint or powder coating the enclosure. For best protection we recommend Wurth Stone Guard or automotive paint.

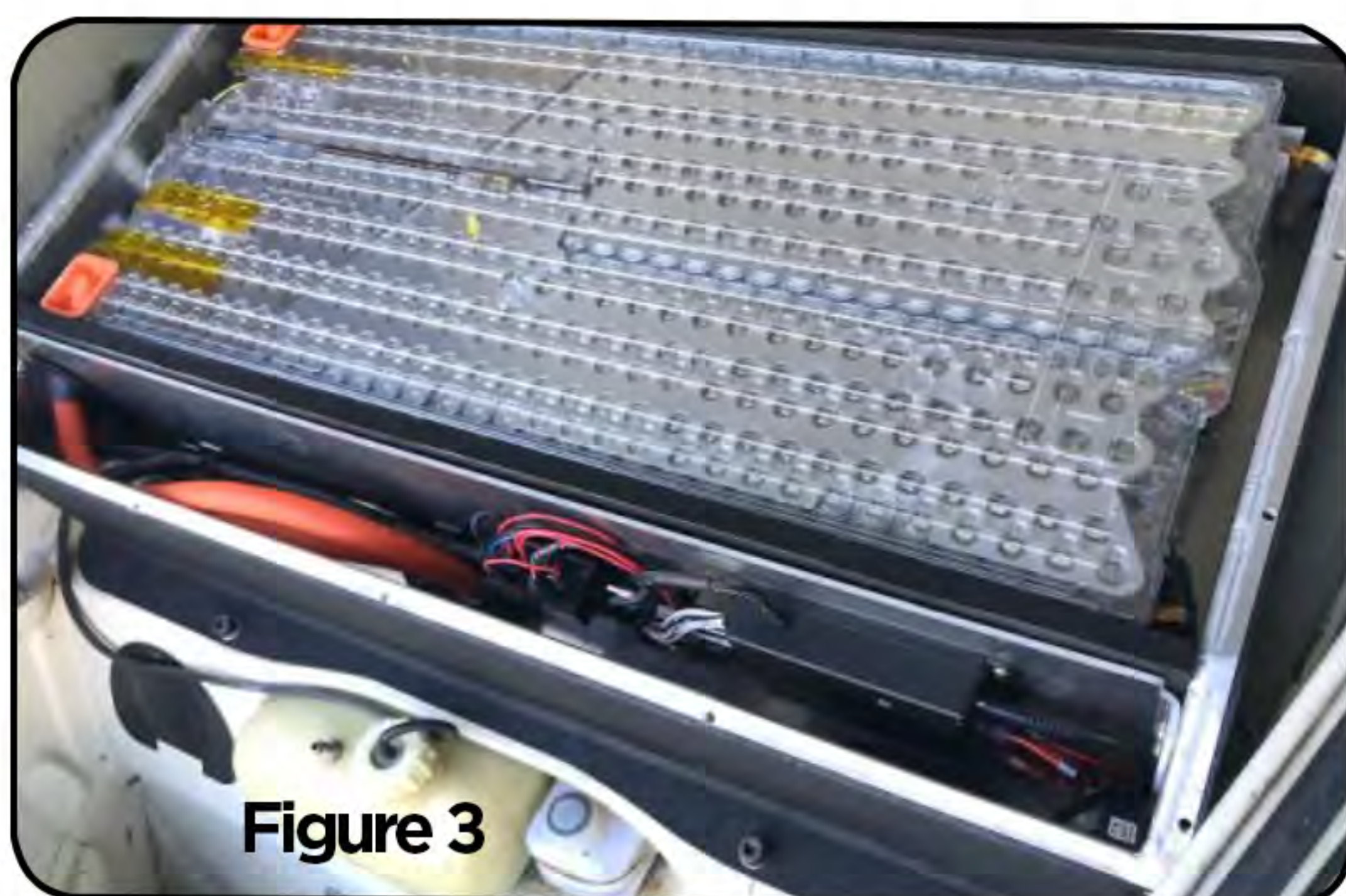


Figure 3



Figure 4

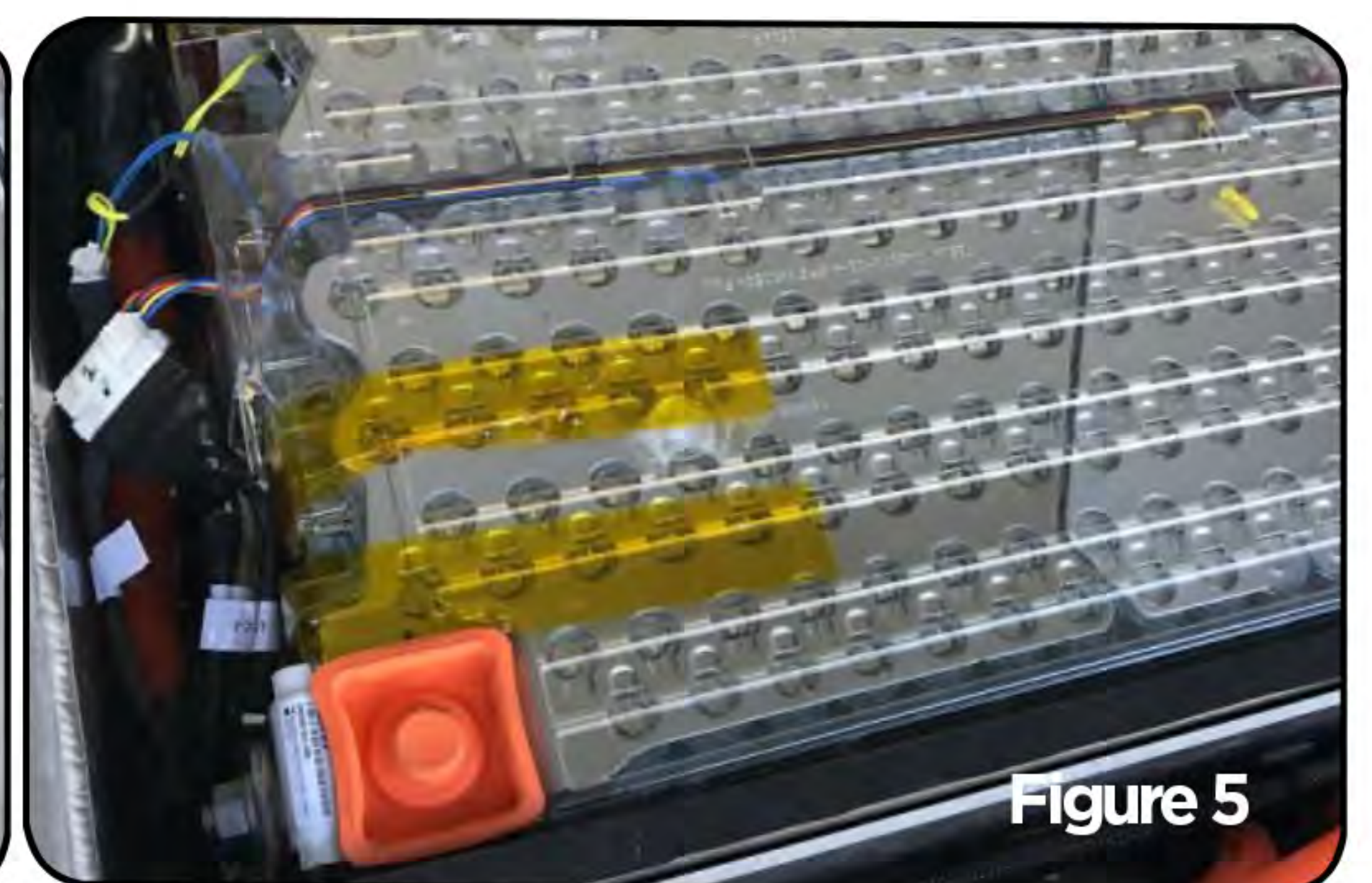


Figure 5



Figure 6

Step 1. Pre-fit and mount the battery box into your vehicle to ensure mounting locations as well as cable routing and overall clearance. You will need to drill 2 holes wherever you plan to have your high voltage positive and negative cables exit the box. We recommend using the $\frac{3}{4}$ " gland nuts for this step. In most applications these will be drilled in the front of the box or on the bottom of the box in front of the BMS plate.

Step 2. Install the provided MX150 Panel Mount Plug for the BMS into the rear of the battery box. Leave populated wires long to connect to BMS later in installation. Refer to the "Dilithium BMS manual v2.2" for plug population



Figure 7

Step 3. Install the rear plastic battery mount panel into the box.

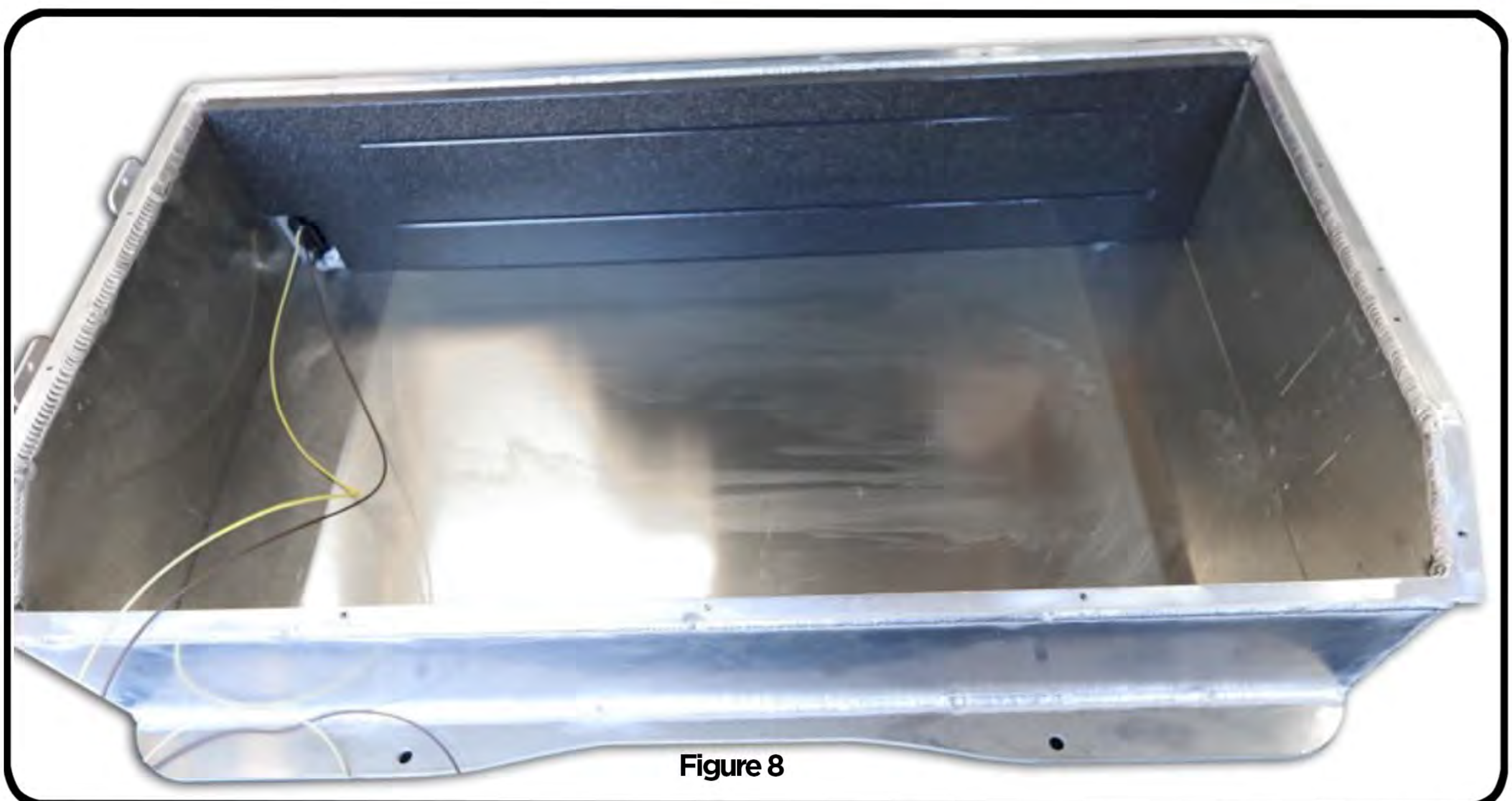
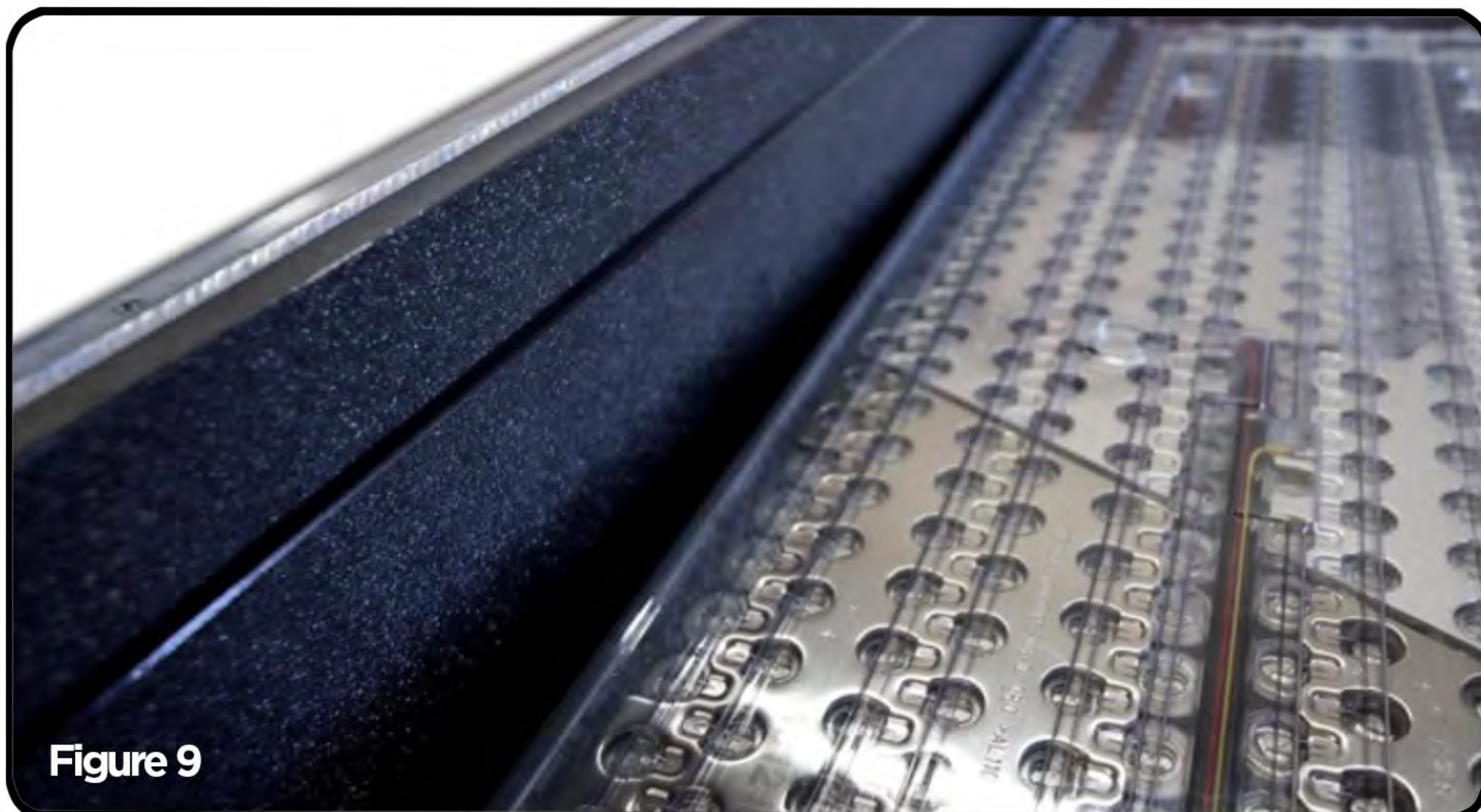


Figure 8



Step 4. Install the first battery into the battery box with the terminals on the left-hand driver's side.

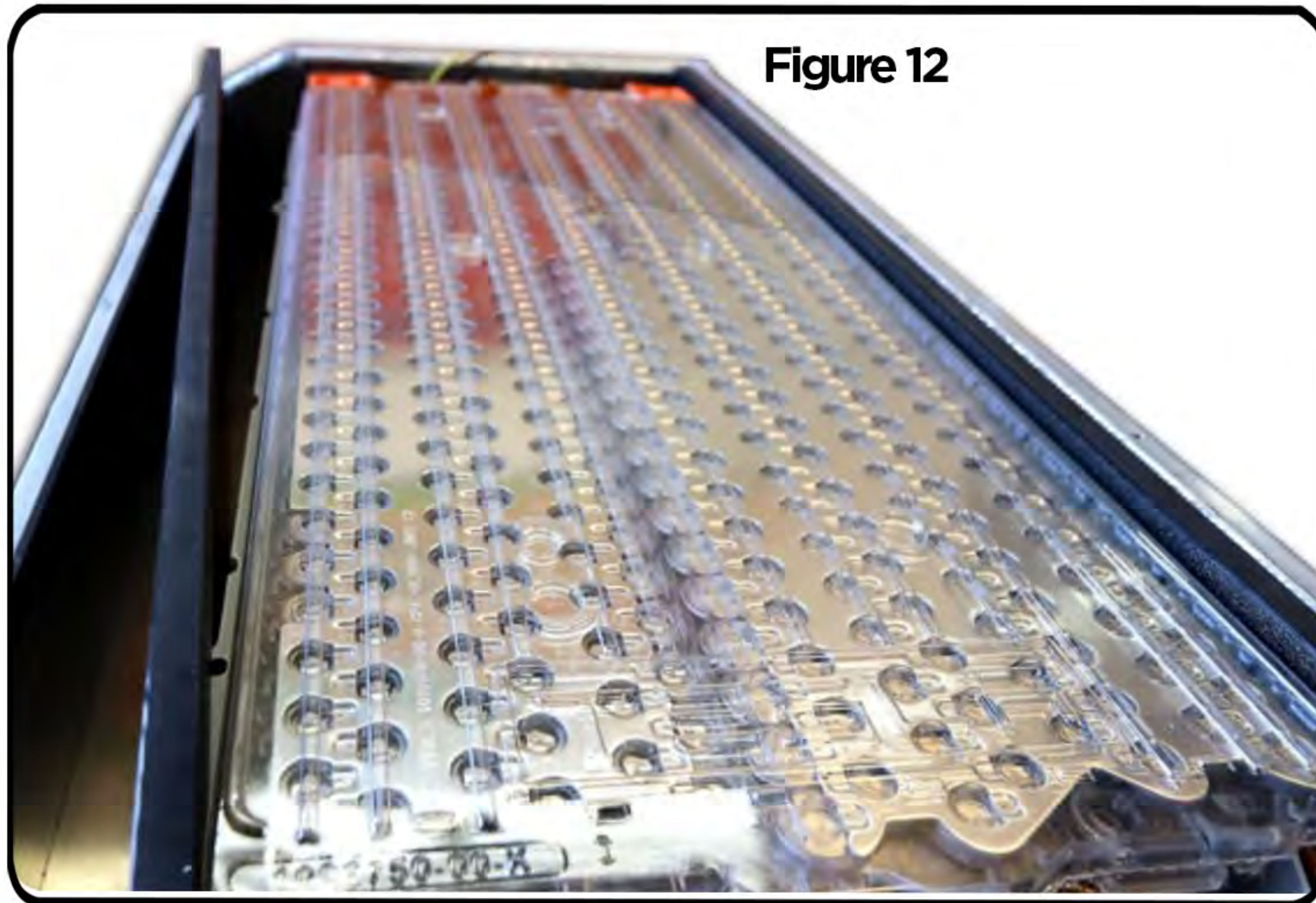
NOTE: Make sure the rib on the battery pack is fully seated in the slot

Step 5. When the Battery Module is properly installed the ribs on the side of the battery will snap into the grooves on the plastic panel.



Step 6. Repeat Step 5 for battery number 2.





Step 7. Install front plastic battery mount panel into the box. This panel will mount the same as the rear panel with the ribs on the modules snapping into the grooves.

Step 8. Install the front BMS Divider Plate up against the front plastic Battery Mount Panel. There are 4 holes on the bottom of the battery box to bolt this panel to. Depending on the application the battery box is being installed into you can either use button head bolts if there is sufficient room below the box or you can use countersunk hardware for flush mounted applications. Once the bottom bolts are installed you can mark the side holes where you will drill holes for additional bolts.





Step 9. In the front portion of the battery box is where you will mount your BMS Controller as well as your pack fuse for the front box. You can also mount other items in there depending on the system you are using such as relays for the BMS Fault Loops and Drive Interlock..

Step 10. Once the battery box is installed in the vehicle and everything is populated it is recommended to run a small bead of caulk along the mounting flange to help keep moisture out of the box when the lid is bolted down.



Have questions or need assistance, please email: support@evwest.com



Product Page