



product page



## Adapter Plate & Coupler Installation Guide



Thank you for purchasing the EV West adapter plate! We appreciate your trust in our products and are excited to be part of your electric conversion journey. Attached, you'll find the installation instructions for attaching the coupler. These instructions will help guide you through the process, ensuring a smooth and efficient installation. If you have any questions or concerns, please feel free to email us at [support@evwest.com](mailto:support@evwest.com) or call us at **888-591-5830**.

**Step 1: Locate the following components**

- Motor shaft coupler
- Hyper 9 motor spacer ring (to be used with all EV West adapter plates)
- Coupler hardware (Bolts, set screw, key stock)



**Step 2:** Lightly sand the inside of the coupler with emery cloth or high-grit sandpaper to remove any imperfections that could hinder installation. This will help the coupler slide on once heated to the proper temperature.



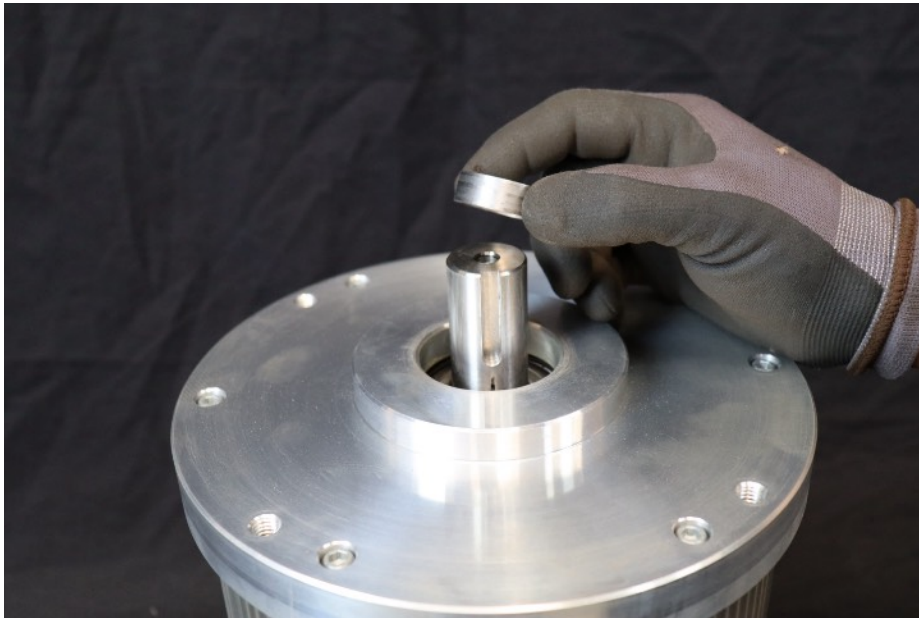
**Step 3:** Perform the following while continuing on with steps 4-7.

Using a hot plate, place the coupler bolt face down first and heat the coupler until it reaches 650°F - 700°F. At that time use a pair of thick gloves to flip the coupler over to the shaft side and continue to heat.

NOTE: If your coupler starts to turn bronze or root beer brown in color that is completely normal and you are ready to install the coupler on the motor shaft.



**Step 4:** Lightly sand the motor shaft with emery cloth or high-grit sandpaper to remove any imperfections that could hinder installation. This will help the coupler slide on once heated to the proper temperature.



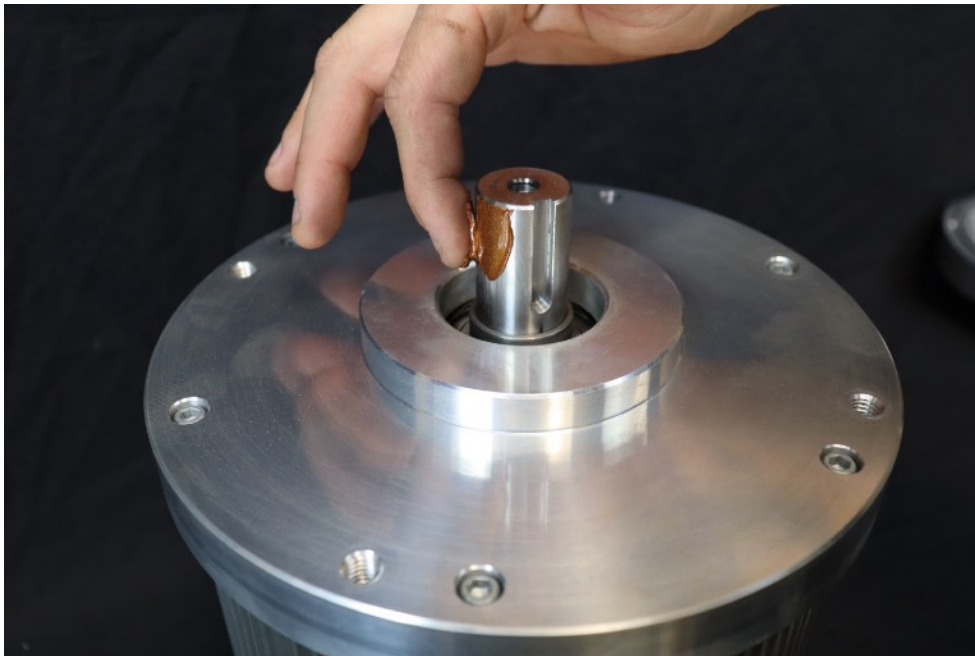
**Step 5:** If you are using an EV West adapter plate you must install the Hyper 9 spacer ring to make sure that the proper coupler height is set.

NOTE: If you purchased your motor from EV West the ring is included in the wire harness packaging. If you have purchased your motor elsewhere you can order the spacer ring by scanning the following QR code.



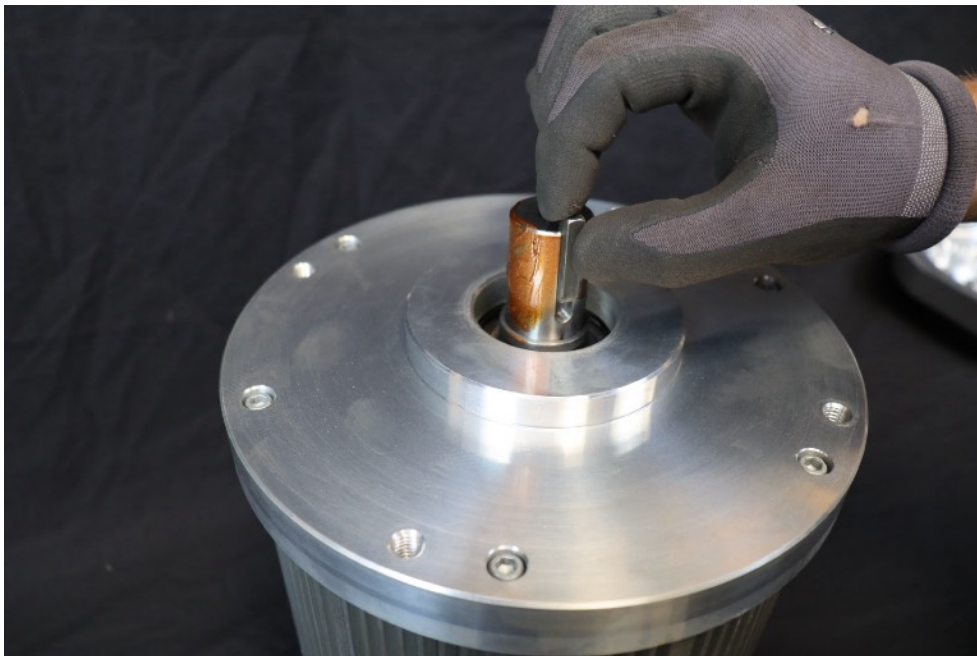


**Step 6:** We recommend applying copper paste or another anti-seize to the motor shaft before installing the coupler. This will make future removal of the coupler much easier. We like to use Wurth CU800 for this. You can also use the same past on all of your battery terminals during installations as well. 1 jar is enough for multiple conversions. Scan the QR code to purchase.





**Step 7:** Using the same emery cloth or high grit sandpaper take the key stock and sand all 4 sides, This helps the key stock slide into the keyway on the motor shaft and the coupler.



**Step 8:** Install the key stock on to the motor shaft.



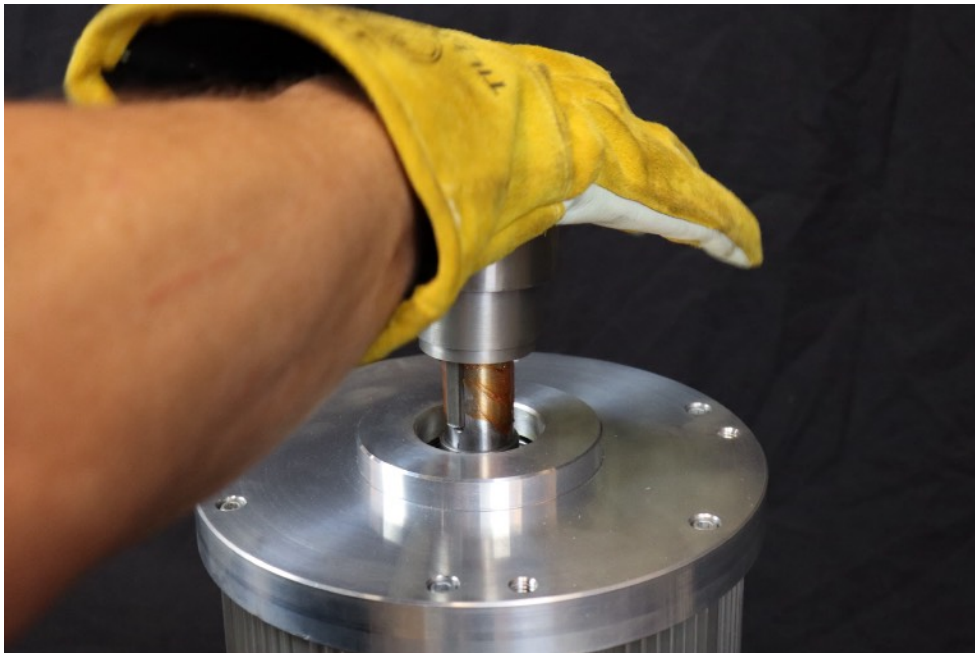
**Step 9:** At this time check the temp of the coupler with a digital thermometer. If your coupler is starting to change in color or you are at 650°F -700°F you are ready to install.



**Step 10:** Using thick gloves, grab the coupler and line up the key shaft on the coupler with the key stock on the motor. Make sure the coupler is lined up and going on the shaft level. If

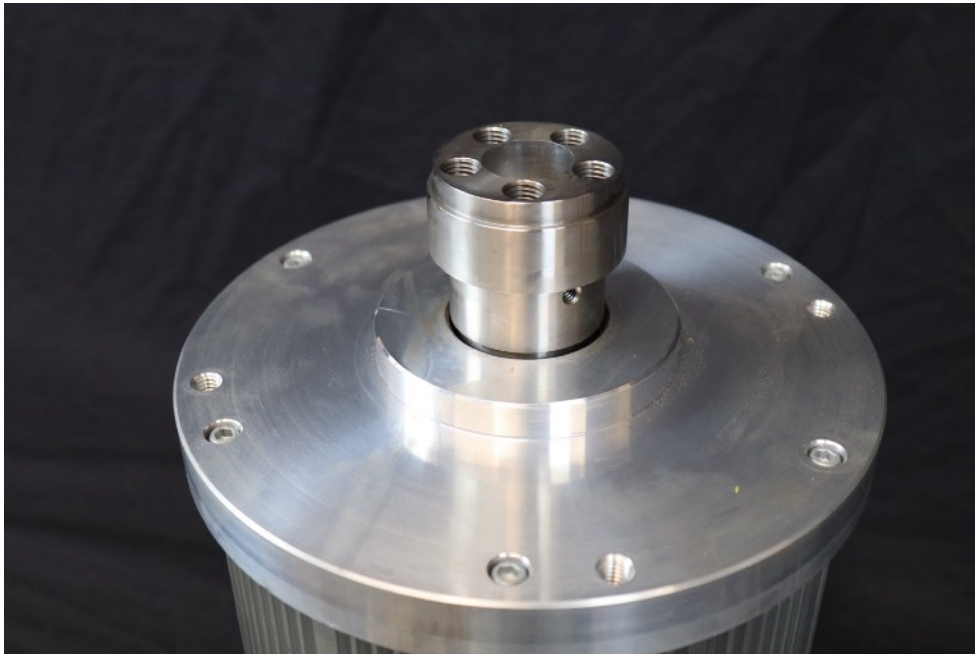


heated to the correct temperature you should be able to use your hand and pop the coupler down onto the shaft.





NOTE: If needed, you can use a block of wood or other flat surface and tap on the coupler to seat it all the way down on the spacer. You should NOT have to use excessive force to seat the coupler. If you do, you should remove the coupler and try again. This may be due to a small imperfection on the shaft or coupler, not heated up to the correct temp, or the coupler not going on to the shaft level and square.



Coupler properly seated.



NOTE: The VW/Porsche adapter will have 3 mounting holes for the motor controller chill plate. These typically will line up with the phase lead block on the motor.



**Step 11:** Find your adapter plate and the (4) 3/8"-24 bolts to mount it to the motor. All EV West adapter plates have 8 mounting holes to help clock the motor in 45° increments based on your mounting needs.



**Step 12:** Once you find the correct orientation of your adapter plate you can then add a small drop of red Loctite to the bolt and thread them into the mounting holes. Torque the bolts to 15 lb-ft.



**Step 13:** Make sure you have installed your set screw in the coupler before installing your flywheel.



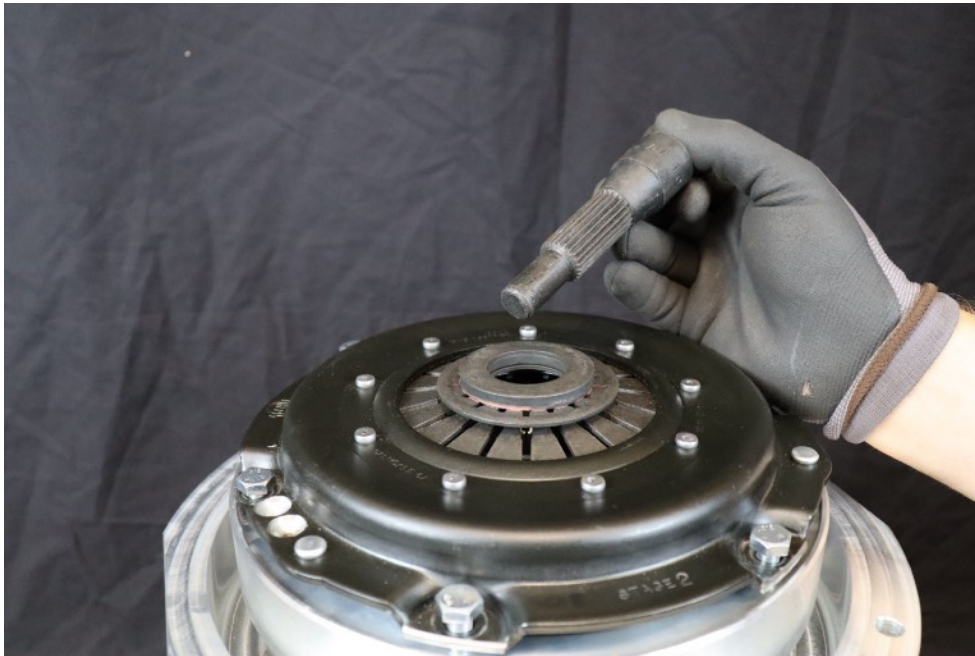
**Step 14:** Install the flywheel onto the motor coupler using the provided hardware. place a small drop of red Loctite to the bolt and thread them into the holes. You will want to use a criss cross or star pattern to tighten the bolts down evenly. Once all bolts are tight and torqued to 60 lb-ft spin the flywheel and make sure that it spins true and is seated down all the way.



**Step 15:** Install clutch disk and pressure plate on top of the flywheel.



**Step 16:** Locate the pressure plate hardware and loosely mount to the flywheel.



**Step 17:** Using the correct clutch alignment tool for your application, line the clutch disk up with your pilot bearing to make sure that both are centered together.



**Step 18:** Tighten the bolts down in a criss cross or star pattern evenly. Torque the bolts to 15 lb-ft



You are now ready to install your motor assembly into your conversion project. If you have any questions or concerns as you move forward with your project, please don't hesitate to email us at [support@evwest.com](mailto:support@evwest.com) or call us at 888-591-5830.

We're here to help make your conversion a success from start to finish.